

**KOOPPF** PROTECTION  
IS ON MY  
WAY

# INTERNATIONAL PPF BRAND

PROTECTION IS ON MY WAY



OFFICIAL WEBSITE  
[www.kooppf.com](http://www.kooppf.com)



FACEBOOK  
[www.facebook.com/koopffofficial](https://www.facebook.com/koopffofficial)



INSTAGRAM  
[www.instagram.com/koopffglobal](https://www.instagram.com/koopffglobal)

# CONTENTS

**01** FACTORY STRENGTH

**02** WHY COOPERATE WITH KOOFILM FACTORY

**03** WHY USE KOOPPF

**04** KOOPPF CERTIFICATION OVERVIEW

**04** DUST-FREE WORKSHOP

**05** KOOPPE WARRANTY CARD

**06** KOOPPF PRODUCT OVERVIEW

**07** AUTOMOTIVE WINDOW FILMS OVERVIEW

**08** KOOPPF® TPU COLORED FILM OVERVIEW-

**09** KOOPPF APPLICATION TOOLS OVERVIEW-

**09** KOOPPF TOOLS FOR TESTING PRODUCT PERFORMANCE



# FACTORY STRENGTH



KOOFILM, as the most advanced manufacturer of printing materials in China, founded in 2006, with a history of 18 years till 2024. With sixteen years of continuous innovation, breakthroughs in technical barriers and improvement of services, the company continues to expand in the field of new materials such as automotive functional films, paint protection films, car window films and multilayer optical and electronic functional films.

KOOFILM has grown into a leading high-tech enterprise integrating R&D, sales supply chain and complete after-sales service. Our aim is to put every cent of focus into products, quality is the life of an enterprise, and service is the source of customers. Now we serve customers in Southeast Asia, South Africa, Eastern Europe and the Americas, and go to the world with stable quality products and high-quality and reliable services.

# Why Cooperate with Koofilm Factory

Big Customer cooperation experience, help customer to increase business in short time. Over 20 years research on coating technology, owning personal coating patent. Different product categories. meet the diversity of the market. Regional protection policy, protect the benefit of distributors worldwide. Offer training services for distributors about the products application.



MORE THAN 49  
COUNTRIES

## Production

12000 Rolls/Month ;  
1500 m<sup>2</sup> De Plants;  
2 Sets High precious coating  
machine

20 Sales team  
32 Technical people;  
150 Workers

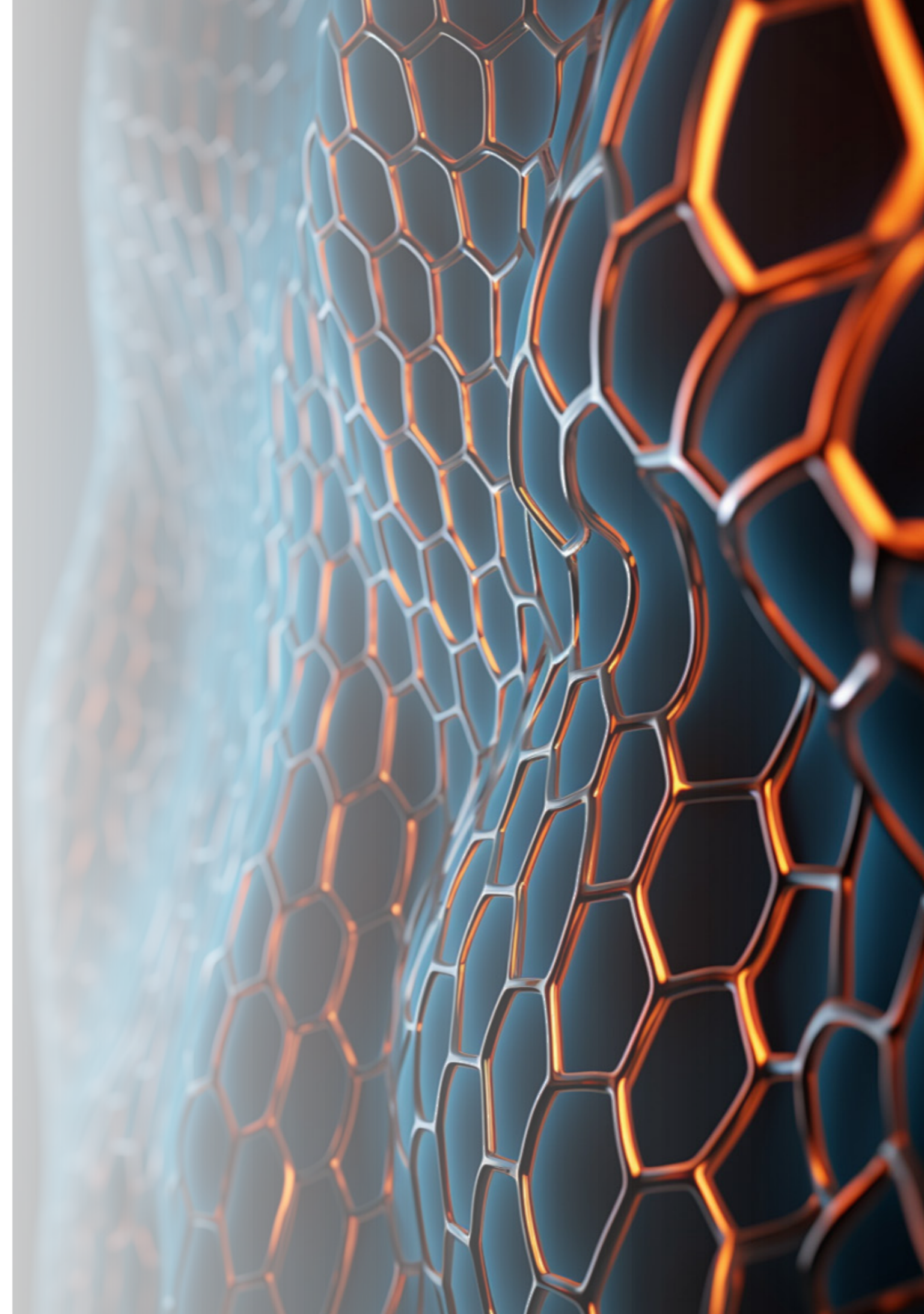
20'000'000 sales  
1000 Shops in China  
24 Agents and distributors

# Why use KOOPPF

**KOOPPF helps defend a new finish against damage from chemical and physical threats:**

Scratches while parking  
Flying rocks  
Acidic corrosion from bird droppings and tree gums  
Fine lines from improper car washing  
Darkening and yellowing of the car's paintwork

Unlike traditional paintwork products (waxing, plated crystal), Koofilm paint protection film is a physical protection that does not generate chemical reactions on the paintwork and is easy to remove. Warranty covers your investment in KOOPPF so you can wash, wax, and drive your car worry-free. No need for expensive resprays or stone chip repairs.



# KOOPPF Certification Overview

## Corporate Honors



SGS

ISO9001

IATF16949

Tensile Test

1



2

Corrosion Test

Outdoor Durability Test

3



4

Glossy Test

Real Construction Test

5



6

Adhesive Test

## Dust-free Workshop



Each production process is individually digitally coded, and the final product has an in-tube roll core number. It can be traced back to the batch number of the previous process, and can be used to track the production time, equipment, manager, and the corresponding raw material batch number.



WWW.KOOPPF.COM

# KOOPPF Certification Overview

## Warranty statement:

KOOPPF gives free replacement of the product due to blistering and delamination caused by defects in raw materials or production processes within the warranty period. The warranty does not cover product wear and tear caused by external forces external corrosion, accidents, collisions or any form of intentional damage to the product, as well as paint protection films installed by non-KOOPPF authorised dealers, or the inability to provide warranty information.

**Warm Tips:** The edges of the protective film must not be scrubbed with excessive force within 72 hours of the application of KOOPPF and it is forbidden to rinse the edges of the protection film directly with a high-pressure water gun. A fine abrasive, solvent-free cleaner that is not strongly acidic or alkaline can be used to remove any residual insect stains from the film.

For vehicles with KOOPPF installed, please do not stick suction cups directly to the film surface if used as a wedding car, wedding car ribbons, fireworks and firecrackers can easily cause staining of the film surface. In case of rain or snow, prevent rain from soaking through for a long time to prevent staining. In order to keep the film surface as bright as new, please return to the authorised construction centre for professional maintenance on a regular basis, the recommended maintenance period is four times a year.

## Supplementary agreement:

The warranty statement is the sole responsibility of KOOPPF to each customer. KOOPPF will not be held responsible for any supplementary commitments given even by an authorised construction centre and the above and all contents are subject to final interpretation by KOOPPF.

Thank you for choosing KOOPPF products!

In order to protect your consumer rights, our construction service centre will fill in the warranty information for you after the application of KOOPPF products. To this point, You can enjoy five years of high-quality experience with KOOPPF series under outdoor conditions and seven years with KOOPPF high series. We will not be responsible for the authenticity of the film or the handling of any claims against it to prevent counterfeit, if a valid KOOPPF warranty is not available.

# KOOPPF Product Overview

								
Model	Dynasty	KING18	KINGPlus	KINGMAX	QueenPro	QueenPlus	Shadow Walker	Shadow Walker Plus
Type	Heat self healing	Heat self healing	Heat self healing	Heat self healing	Heat self healing	Heat self healing	Heat self healing	Heat self healing
Appearance	Gloss	Gloss	Gloss	Gloss	Gloss	Gloss	Matte	Matte
Thickness	7.5mil	7.5mil	8.5mil	9.5mil	7.5mil	8.5mil	7.5mil	8.5mil
TPU	Lubrizol	Lubrizol	Lubrizol	Lubrizol	Hunsman	BASF	Lubrizol	Lubrizol
Product Elongation at break	≥350%	≥300%	>300%	>300%	≥350%	≥350%	>300%	>300%
Coating Elongation at break	≥120%	≥100%	≥100%	≥100%	≥120%	≥120%	≥100%	≥100%
QUV2000h	ΔE<1.5	ΔE<1.5	ΔE<1.5	ΔE<1.5	ΔE<2	ΔE<2	ΔE<1.5	ΔE<1.5
Warranty	10years	7years	8years	8years	5years	4years	8ears	8years



07

5%VLT

21%VLT

35%VLT

45%VLT

70%VLT

# Automotive Window Films Overview

## KOOPPF® Nano ceramic tinting film-Features and Benefits

Reduces the large amount of heat generated by infrared.

Isolates 99% of ultraviolet rays, to prevent skin damage and reduce the aging of cars.

Tear-resistant and puncture-proof function, to prevent damage caused by the accidental breaking of glass.

Retains privacy and security.

Maintains eye comfort and reduce the accidental situation caused by the glare

## Optical and Solar Properties

Item Number	Thickness	VLT	IRR	UVR
KTIRO5100	2 mil	5%	>99%	>99%
KTIR20100	2 mil	21%	>99%	>99%
KTIR35100	2 mil	35%	>99%	>99%
KTIR50100	2 mil	45%	>99%	>99%
KTIR70100	2 mil	70%	>99%	>99%

# KOOPPF® TPU Colored Film Overview

KOOPPF TPU Colored Film is a new type product that combines TPU Paint Protection Film and color change elements

## Item Number

## Color

TPU- KCPB	Piano Gloss Black
TPU- KCBM	Black Matte TPU
TPU-1001	Matte Pearl White
TPU- 1004	Matte Liquid Silver
TPU-1007	Matte Gun Grey
TPU-1010	Matte Frozen Berry
TPU- 2001	Starry Phantom
TPU- 2003	Champagne Gold
TPU- 2005	Charcoal Blue
TPU- 2007	Shark Blue
TPU-2009	Pearl White
TPU-2011	Metallic Black
TPU-2013	Holographic White



# KOOPPF Application Tools Overview

KOOCUT software contains thousands of vehicle patterns for the global automotive PPF market. Using 3D scanning technology, we keep creating more patterns constantly. This helps maximize installer efficiency while minimizing film waste.

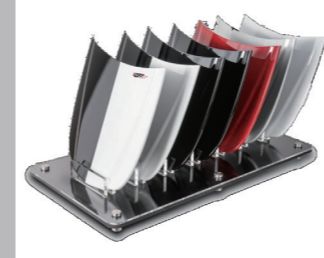
## KOOPPF Tools



## KOOPPF Tools for Testing Product Performance



Impact Tester



Test Kit



Thickness Tester



Car wheel cover

## KOOPPF Accessories

